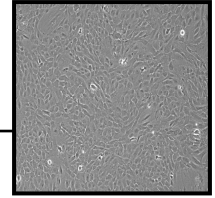


Clonetics™ rat aortic smooth muscle cells

Technical data sheet



Introduction

Clonetics™ rat aortic smooth muscle cells (R-ASM) are high quality primary cells from the aorta of 150-200 gram adult male Sprague-Dawley rats. Cryopreserved R-ASM are prepared by standardized methods and are ready for immediate culture upon thaw.

Characterization of cells

Each lot of Rat-ASM is tested for purity by immunofluorescent staining and confirmed to be positive for alpha smooth muscle actin (>95%) and negative for VE cadherin. Cells are batch tested to display morphologic and growth properties equivalent to freshly prepared cells, and guaranteed to achieve 12 population doublings. Routine characterization of R-ASM cells includes viability, morphology and proliferative capacity throughout serial passages.

Recommended medium

Media recommended for the growth of R-ASM contains following components:

- DMEM:F12, Lonza No. BE04-687Q
- Heat-inactivated fetal bovine serum, Lonza No. 14-503E
- Gentamicin/amphotericin-B Lonza No. CC-4083

Performance

Recommended seeding density for subculture	5,000 cells/cm ²
Typical time from subculture to confluent monolayer	5 - 7 days
Additional population doublings guaranteed using Clonetics™ system	12

Quality control

Each batch is tested for viability and proliferative capacity using the recommended media and reagents. All cells are tested and confirmed to be negative for mycoplasma, bacteria yeast and fungi.

A certificate of analysis (COA) for each cell lot is shipped with each order. COAs for all other products are available upon request.

Ordering information

R-ASM-580	Rat aortic smooth muscle cells	≥0.5 million cells in a 0.5 ml cell suspension
BE04-687Q	DMEM:F12	1 L
14-503E	FBS, heat inactivated	100 ml
CC-4083	GA-1000	5 ml
CC-5034	ReagentPack™	Contains 100 ml each: HEPES, trypsin/EDTA and trypsin neutralizing solution.

Product warranty

CULTURES HAVE A FINITE LIFESPAN *IN VITRO*. Lonza guarantees cell performance only when the approved media and supplements are used.

THESE PRODUCTS ARE FOR RESEARCH USE ONLY. Not approved for human or veterinary use, for application to humans or animals, or for use *in vitro* diagnostic or clinical procedures. **WARNING:** Handle as a potentially biohazardous material under biosafety level 1 containment. These cells are not known to contain an agent known to cause disease in healthy adult humans. These cells have not been screened for hepatitis B, human immunodeficiency viruses or other adventitious agents. If you require further information, please contact your site safety officer or scientific support.