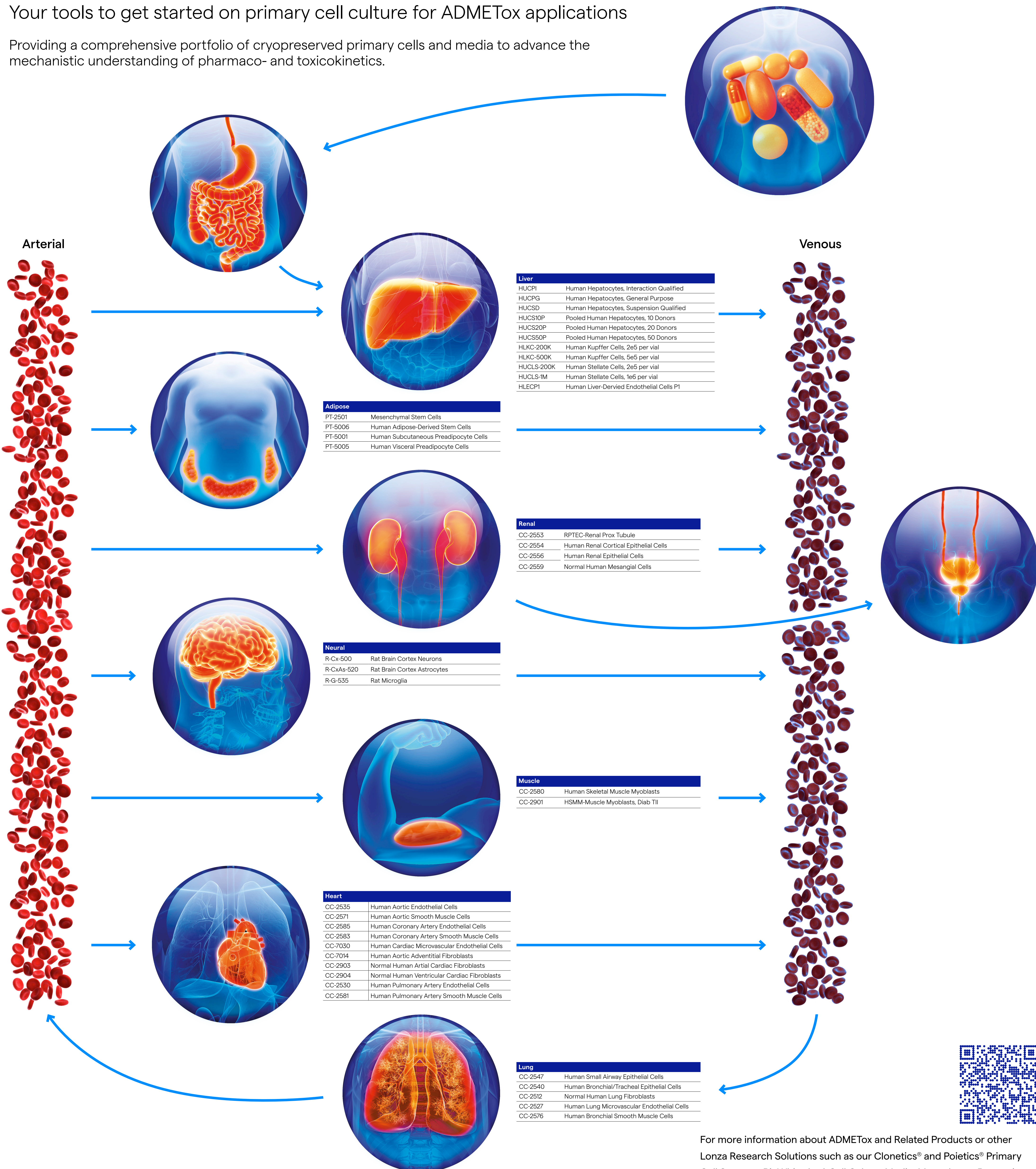


Supporting *in vitro* ADMETox with an advanced portfolio of primary cells and media

Your tools to get started on primary cell culture for ADMETox applications

Providing a comprehensive portfolio of cryopreserved primary cells and media to advance the mechanistic understanding of pharmac- and toxicokinetics.



Liver	
HUCPI	Human Hepatocytes, Interaction Qualified
HUCPG	Human Hepatocytes, General Purpose
HUCSD	Human Hepatocytes, Suspension Qualified
HUCS10P	Pooled Human Hepatocytes, 10 Donors
HUCS20P	Pooled Human Hepatocytes, 20 Donors
HUCS50P	Pooled Human Hepatocytes, 50 Donors
HLKC-200K	Human Kupffer Cells, 2e5 per vial
HLKC-500K	Human Kupffer Cells, 5e5 per vial
HUCLS-200K	Human Stellate Cells, 2e5 per vial
HUCLS-1M	Human Stellate Cells, 1e6 per vial
HLECP1	Human Liver-Derived Endothelial Cells P1

Adipose	
PT-2501	Mesenchymal Stem Cells
PT-5006	Human Adipose-Derived Stem Cells
PT-5001	Human Subcutaneous Preadipocyte Cells
PT-5005	Human Visceral Preadipocyte Cells

Renal	
CC-2553	RPTEC-Renal Prox. Tubule
CC-2554	Human Renal Cortical Epithelial Cells
CC-2556	Human Renal Epithelial Cells
CC-2559	Normal Human Mesangial Cells

Neural	
R-Cx-500	Rat Brain Cortex Neurons
R-CxAs-520	Rat Brain Cortex Astrocytes
R-G-535	Rat Microglia

Muscle	
CC-2580	Human Skeletal Muscle Myoblasts
CC-2901	HSM-Muscle Myoblasts, Diab TII

Heart	
CC-2535	Human Aortic Endothelial Cells
CC-2571	Human Aortic Smooth Muscle Cells
CC-2585	Human Coronary Artery Endothelial Cells
CC-2583	Human Coronary Artery Smooth Muscle Cells
CC-7030	Human Cardiac Microvascular Endothelial Cells
CC-7014	Human Aortic Adventitial Fibroblasts
CC-2903	Normal Human Atrial Cardiac Fibroblasts
CC-2904	Normal Human Ventricular Cardiac Fibroblasts
CC-2530	Human Pulmonary Artery Endothelial Cells
CC-2581	Human Pulmonary Artery Smooth Muscle Cells

Lung	
CC-2547	Human Small Airway Epithelial Cells
CC-2540	Human Bronchial/Tracheal Epithelial Cells
CC-2512	Normal Human Lung Fibroblasts
CC-2527	Human Lung Microvascular Endothelial Cells
CC-2576	Human Bronchial Smooth Muscle Cells



For more information about ADMETox and Related Products or other Lonza Research Solutions such as our Clonetics® and Poietics® Primary Cell Systems, BioWhittaker® Cell Culture Media, Mycoplasma Prevention and Detection Products or Nucleofector® Technology, please visit:

lonza.com/admetox

Contact information

North America
Customer Service: +1 800 638 8174 (toll free)
order.us@lonza.com
Scientific Support: +1 800 521 0390 (toll free)
scientific.support@lonza.com

Europe
Customer Service: +32 87 321 611
order.europe@lonza.com
Scientific Support: +49 221 99199 400
scientific.support.eu@lonza.com

International
Contact your local Lonza distributor
Customer Service: +1 301 898 7025
scientific.support@lonza.com

International offices
Australia +61 1300 657 508
Belgium +32 87 321 611
Brazil +55 11 4028 8000
China +86 21 6305 8866
France 0800 91 19 81 (toll free)
Germany 0800 182 52 87 (toll free)

India +91 124 6052941
Japan +81 3 6254 0650
Luxembourg +32 87 321 611
Singapore +65 6521 4379
The Netherlands 0800 022 4525 (toll free)
United Kingdom 0808 234 97 88 (toll free)

For research use only. Not for use in diagnostic procedures. Lonza Group Ltd. and its affiliates (collectively and individually, "Lonza") make efforts to include accurate and up-to-date information. However, Lonza makes no representations or warranties, express or implied, including as to accuracy or completeness of information. All trademarks belong to Lonza, and are registered in the USA, EU and/or CH, or used in common law, or belong to third-party owners and are used for only informational purposes. All third-party copyrights have been reproduced with permission from their owners. The user bears the sole responsibility for determining the existence of any third-party rights and obtaining any necessary licenses and approvals. For more information, including regarding legal disclaimers, Lonza's intellectual property rights, and how Lonza collects, uses and protects personal information: www.lonza.com/legal, https://www.lonza.com/about-us/strategy © 2025 Lonza. CD-PO082 11/25