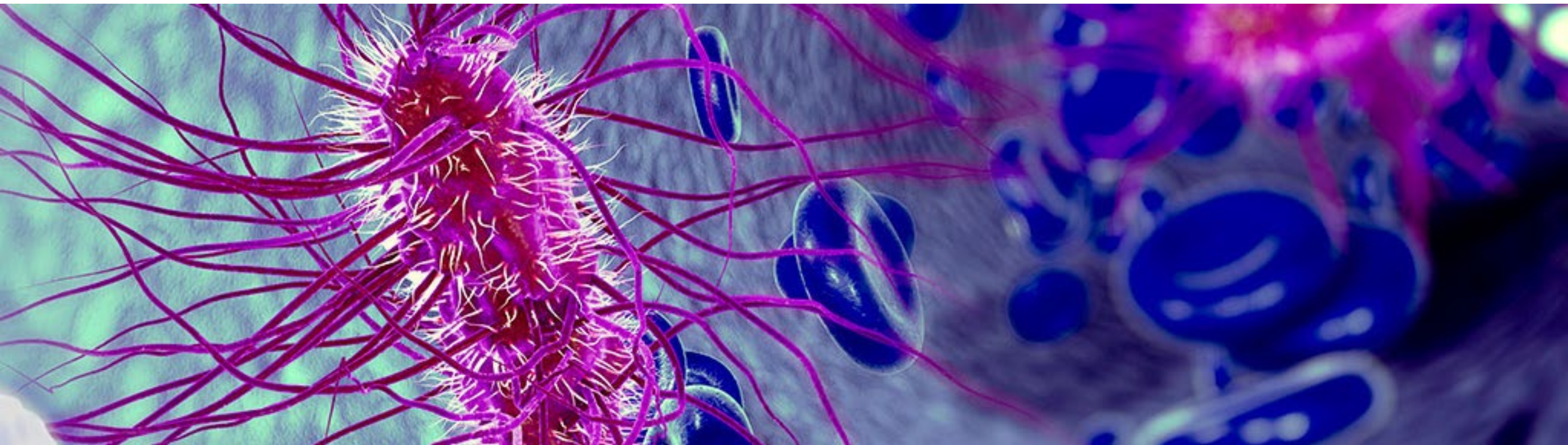


# Assay Selection Guide



# Do You Need to Perform Endotoxin or Pyrogen Testing?

---



A dark blue rectangular button with a 3D effect, featuring the word "Endotoxin" in white, bold, sans-serif font.

A dark blue rectangular button with a 3D effect, featuring the word "Pyrogen" in white, bold, sans-serif font.

Cat. No.	Description	Size
00296407	3 vials pMAT cells (cryopreserved, pooled PBMC) 3 vials Fetal Bovine Serum Supplement (cryopreserved) Pelikine Human IL-6 ELISA Rapid Set A Pelikine Human IL-6 ELISA Rapid Set B	288 tests (3 x 96-well plates)
00296408	3 vials pMAT cells (cryopreserved, pooled PBMC) 3 vials Human Serum Supplement (cryopreserved) Pelikine Human IL-6 ELISA Rapid Set A Pelikine Human IL-6 ELISA Rapid Set B	288 tests (3 x 96-well plates)



# Do You Want to Perform Endotoxin Testing in Your Laboratory?

**Lonza**

Yes

No



# Endotoxin Testing Services

Lonza's Endotoxin Testing Services offer you the best in routine and customized endotoxin testing. The facilities executing testing are GMP compliant and provide expertise in gel clot, kinetic chromogenic and kinetic turbidimetric LAL assays.

Our expert [Scientific Support](#) team can answer any questions you have about our testing services.



# Do You Want to Use a Traditional LAL-based Assay or a Sustainable Assay for Endotoxin Testing?

**Lonza**

LAL-based

Sustainable





# PyroGene® Recombinant Factor C Assay

Cat. No.	Description	Size
50-658U	2 x 96 tests/vial rFC enzyme solution, 2 x 6 mL vial fluorogenic substrate, 2 x 5 mL vial rFC assay buffer, 2 vials endotoxin, 2 x 30 mL vial LAL Reagent Water	192 tests
50-658NV	30 x 96 tests/vial rFC enzyme solution, 30 x 6 mL vial fluorogenic substrate, 30 x 5 mL vial rFC assay buffer, 10 vials endotoxin	2,880 tests

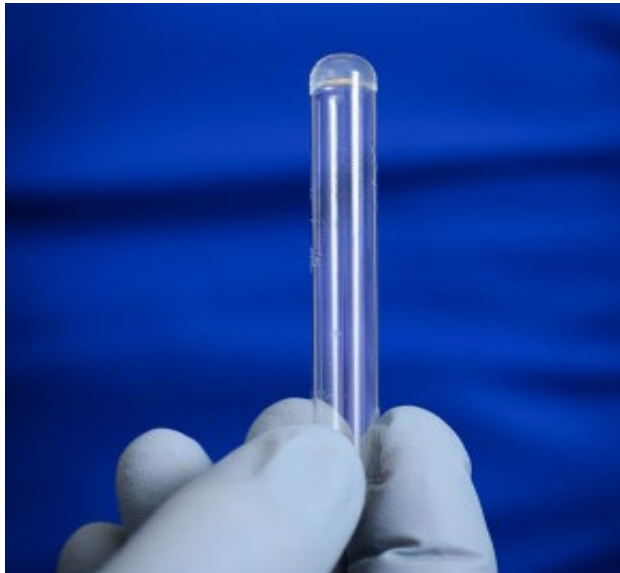
[Incubating fluorescence reader](#) or [multimode reader](#) required



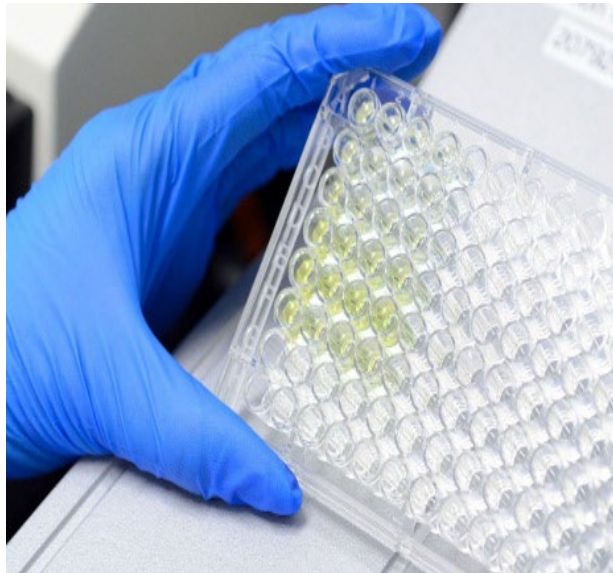
# Do You Want Qualitative or Quantitative Results?

**Lonza**

Qualitative



Quantitative



Unknown





# What Assay Sensitivity Do You Need?

0.03 EU/mL

0.25 EU/mL

0.06 EU/mL

Unknown

0.125 EU/mL



# PYROGENT® Gel Clot LAL Assay

## 0.03 EU/mL Sensitivity



Cat. No.	Description	Size
N194-03	5 x 50 tests/vial lysate (endotoxin purchased separately)	250 tests
N294-03	4 x 50 tests/vial lysate, 1 vial endotoxin	200 tests
N494-03	80 x 50 tests/vial lysate, 20 vials endotoxin	4,000 tests
E194U-03	100 x 50 tests/vial lysate (endotoxin purchased separately)	5,000 tests
N186	Control Standard Endotoxin	5 vials
7360L	Control Standard Endotoxin	25 vials



# PYROGENT® Gel Clot LAL Assay

## 0.06 EU/mL Sensitivity



Cat. No.	Description	Size
N283-06	4 x 16 tests/vial lysate, 1 vial endotoxin	64 tests
F245U-06	100 x 16 tests/vial lysate (endotoxin purchased separately)	1,600 tests
N194-06	5 x 50 tests/vial lysate (endotoxin purchased separately)	250 tests
N294-06	4 x 50 tests/vial lysate, 1 vial endotoxin	200 tests
N494-06	80 x 50 tests/vial lysate, 20 vials endotoxin	4,000 tests
E194L-06	25 x 50 tests/vial lysate (endotoxin purchased separately)	1,250 tests
E194U-06	100 x 50 tests/vial lysate (endotoxin purchased separately)	5,000 tests
N186	Control Standard Endotoxin	5 vials
7360L	Control Standard Endotoxin	25 vials



# PYROGENT® Gel Clot LAL Assay

## 0.125 EU/mL Sensitivity



Cat. No.	Description	Size
N283-125	4 x 16 tests/vial lysate, 1 vial endotoxin	64 tests
F245U-125	100 x 16 tests/vial lysate (endotoxin purchased separately)	1,600 tests
N194-125	5 x 50 tests/vial lysate (endotoxin purchased separately)	250 tests
N294-125	4 x 50 tests/vial lysate, 1 vial endotoxin	200 tests
N494-125	80 x 50 tests/vial lysate, 20 vials endotoxin	4,000 tests
E194U-125	100 x 50 tests/vial lysate (endotoxin purchased separately)	5,000 tests
N186	Control Standard Endotoxin	5 vials
7360L	Control Standard Endotoxin	25 vials



# PYROGENT® Gel Clot LAL Assay

## 0.25 EU/mL Sensitivity



Cat. No.	Description	Size
N284-25	4 x 50 tests/vial lysate, 1 vial endotoxin	200 tests
N288-25	80 x 50 tests/vial lysate, 20 vials endotoxin	4,000 tests
E209U-25	100 x 50 tests/vial lysate (endotoxin purchased separately)	5,000 tests
N186	Control Standard Endotoxin	5 vials
7360L	Control Standard Endotoxin	25 vials





# What Assay Sensitivity Do You Need?

**Lonza**

0.005 EU/mL

0.01 EU/mL

Unknown



# Kinetic-QCL® Kinetic Chromogenic LAL Assay



Cat. No.	Description	Size
50-650U	8 x 24 tests/vial lysate, 2 vials endotoxin, 3 x 30 mL vial LAL Reagent Water	192 tests
50-650NV	85 x 24 tests/vial lysate, 15 vials endotoxin	2,040 tests
50-650H	100 x 24 tests/vial lysate, 10 vials endotoxin	2,400 tests
K50-643L	25 x 24 tests/vial lysate (endotoxin purchased separately)	600 tests
K50-643U	100 x 24 tests/vial lysate (endotoxin purchased separately)	2,400 tests
E50-643L	Control Standard Endotoxin	25 vials

[Incubating absorbance reader](#) or [multimode reader](#) required



# PYROGENT® 5000 Kinetic Turbidimetric LAL Assay



Cat. No.	Description	Size
N383	2 x 50 tests/vial lysate, 2 vials reconstitution buffer, 1 vial endotoxin	100 tests
N384	2 x 100 tests/vial lysate, 2 vials reconstitution buffer, 1 vial endotoxin	200 tests
N588	45 x 50 tests/vial lysate, 45 vials reconstitution buffer, 10 vial endotoxin	2,250 tests
N688	45 x 100 tests/vial lysate, 45 vials reconstitution buffer, 10 vial endotoxin	4,500 tests
T50-300L	25 x 50 tests/vial lysate (buffer and endotoxin purchased separately)	1,250 tests
T50-300U	100 x 50 tests/vial lysate (buffer and endotoxin purchased separately)	5,000 tests
T50-600L	25 x 100 tests/vial lysate (buffer and endotoxin purchased separately)	2,500 tests
T50-600U	100 x 100 tests/vial lysate (buffer and endotoxin purchased separately)	10,000 tests
B50-300L	Reconstitution buffer (for T50-300L)	25 vials
B50-300U	Reconstitution buffer (for T50-300U)	100 vials
B50-600L	Reconstitution buffer (for T50-600L)	25 vials
B50-600U	Reconstitution buffer (for T50-600U)	100 vials
7460L	Control Standard Endotoxin	25 vials



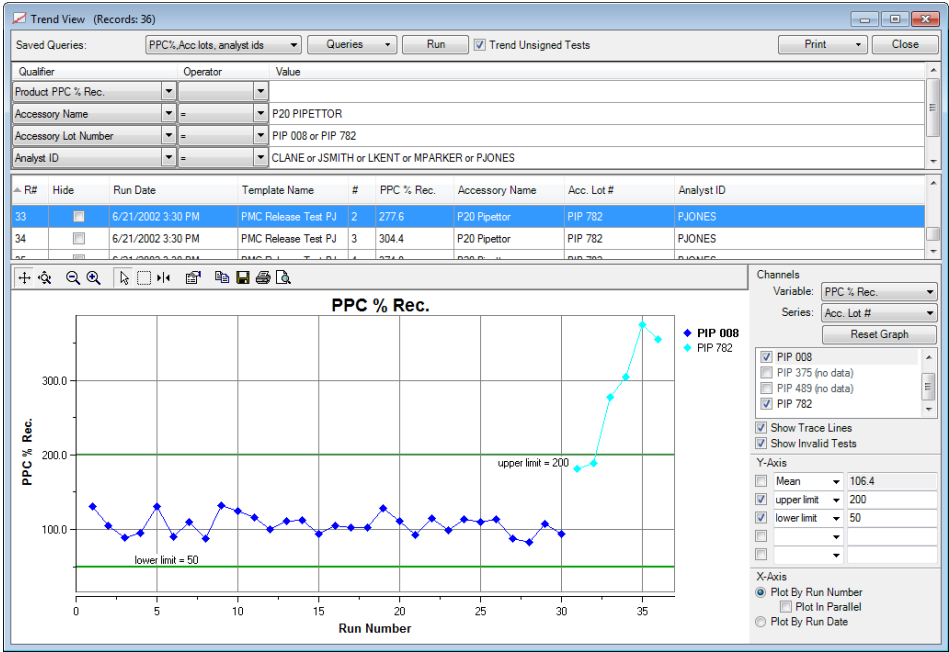
[Incubating absorbance reader](#) or [multimode reader](#) required

# Are Trending Results Important?



Yes

No



# What Assay Sensitivity Do You Need?

0.005 EU/mL

0.01 EU/mL

Unknown





# Kinetic-QCL® Kinetic Chromogenic LAL Assay



Cat. No.	Description	Size
50-650U	8 x 24 tests/vial lysate, 2 vials endotoxin, 3 x 30 mL vial LAL Reagent Water	192 tests
50-650NV	85 x 24 tests/vial lysate, 15 vials endotoxin	2,040 tests
50-650H	100 x 24 tests/vial lysate, 10 vials endotoxin	2,400 tests
K50-643L	25 x 24 tests/vial lysate (endotoxin purchased separately)	600 tests
K50-643U	100 x 24 tests/vial lysate (endotoxin purchased separately)	2,400 tests
E50-643L	Control Standard Endotoxin	25 vials

Incubating absorbance reader or multimode reader required



# PYROGENT® 5000 Kinetic Turbidimetric LAL Assay



Cat. No.	Description	Size
N383	2 x 50 tests/vial lysate, 2 vials reconstitution buffer, 1 vial endotoxin	100 tests
N384	2 x 100 tests/vial lysate, 2 vials reconstitution buffer, 1 vial endotoxin	200 tests
N588	45 x 50 tests/vial lysate, 45 vials reconstitution buffer, 10 vial endotoxin	2,250 tests
N688	45 x 100 tests/vial lysate, 45 vials reconstitution buffer, 10 vial endotoxin	4,500 tests
T50-300L	25 x 50 tests/vial lysate (buffer and endotoxin purchased separately)	1,250 tests
T50-300U	100 x 50 tests/vial lysate (buffer and endotoxin purchased separately)	5,000 tests
T50-600L	25 x 100 tests/vial lysate (buffer and endotoxin purchased separately)	2,500 tests
T50-600U	100 x 100 tests/vial lysate (buffer and endotoxin purchased separately)	10,000 tests
B50-300L	Reconstitution buffer (for T50-300L)	25 vials
B50-300U	Reconstitution buffer (for T50-300U)	100 vials
B50-600L	Reconstitution buffer (for T50-600L)	25 vials
B50-600U	Reconstitution buffer (for T50-600U)	100 vials
7460L	Control Standard Endotoxin	25 vials



[Incubating absorbance reader](#) or [multimode reader](#) required

# Do You have Budget Constraints?

**Lonza**

Yes

No



# What Assay Sensitivity Do You Need?

0.005 EU/mL

0.01 EU/mL

Unknown



# Kinetic-QCL® Kinetic Chromogenic LAL Assay



Cat. No.	Description	Size
50-650U	8 x 24 tests/vial lysate, 2 vials endotoxin, 3 x 30 mL vial LAL Reagent Water	192 tests
50-650NV	85 x 24 tests/vial lysate, 15 vials endotoxin	2,040 tests
50-650H	100 x 24 tests/vial lysate, 10 vials endotoxin	2,400 tests
K50-643L	25 x 24 tests/vial lysate (endotoxin purchased separately)	600 tests
K50-643U	100 x 24 tests/vial lysate (endotoxin purchased separately)	2,400 tests
E50-643L	Control Standard Endotoxin	25 vials

[Incubating absorbance reader](#) or [multimode reader](#) required





# PYROGENT® 5000 Kinetic Turbidimetric LAL Assay

**Lonza**

Cat. No.	Description	Size
N383	2 x 50 tests/vial lysate, 2 vials reconstitution buffer, 1 vial endotoxin	100 tests
N384	2 x 100 tests/vial lysate, 2 vials reconstitution buffer, 1 vial endotoxin	200 tests
N588	45 x 50 tests/vial lysate, 45 vials reconstitution buffer, 10 vial endotoxin	2,250 tests
N688	45 x 100 tests/vial lysate, 45 vials reconstitution buffer, 10 vial endotoxin	4,500 tests
T50-300L	25 x 50 tests/vial lysate (buffer and endotoxin purchased separately)	1,250 tests
T50-300U	100 x 50 tests/vial lysate (buffer and endotoxin purchased separately)	5,000 tests
T50-600L	25 x 100 tests/vial lysate (buffer and endotoxin purchased separately)	2,500 tests
T50-600U	100 x 100 tests/vial lysate (buffer and endotoxin purchased separately)	10,000 tests
B50-300L	Reconstitution buffer (for T50-300L)	25 vials
B50-300U	Reconstitution buffer (for T50-300U)	100 vials
B50-600L	Reconstitution buffer (for T50-600L)	25 vials
B50-600U	Reconstitution buffer (for T50-600U)	100 vials
7460L	Control Standard Endotoxin	25 vials



[Incubating absorbance reader](#) or [multimode reader](#) required

## Gel Clot LAL Assays



# What Assay Sensitivity Do You Need?

0.03 EU/mL

0.25 EU/mL

0.06 EU/mL

Unknown

0.125 EU/mL



# PYROGENT® Gel Clot LAL Assay

## 0.03 EU/mL Sensitivity



Cat. No.	Description	Size
N194-03	5 x 50 tests/vial lysate (endotoxin purchased separately)	250 tests
N294-03	4 x 50 tests/vial lysate, 1 vial endotoxin	200 tests
N494-03	80 x 50 tests/vial lysate, 20 vials endotoxin	4,000 tests
E194U-03	100 x 50 tests/vial lysate (endotoxin purchased separately)	5,000 tests
N186	Control Standard Endotoxin	5 vials
7360L	Control Standard Endotoxin	25 vials



# PYROGENT® Gel Clot LAL Assay

## 0.06 EU/mL sensitivity



Cat. No.	Description	Size
N283-06	4 x 16 tests/vial lysate, 1 vial endotoxin	64 tests
F245U-06	100 x 16 tests/vial lysate (endotoxin purchased separately)	1,600 tests
N194-06	5 x 50 tests/vial lysate (endotoxin purchased separately)	250 tests
N294-06	4 x 50 tests/vial lysate, 1 vial endotoxin	200 tests
N494-06	80 x 50 tests/vial lysate, 20 vials endotoxin	4,000 tests
E194L-06	25 x 50 tests/vial lysate (endotoxin purchased separately)	1,250 tests
E194U-06	100 x 50 tests/vial lysate (endotoxin purchased separately)	5,000 tests
N186	Control Standard Endotoxin	5 vials
7360L	Control Standard Endotoxin	25 vials



# PYROGENT® Gel Clot LAL Assay

## 0.125 EU/mL sensitivity



Cat. No.	Description	Size
N283-125	4 x 16 tests/vial lysate, 1 vial endotoxin	64 tests
F245U-125	100 x 16 tests/vial lysate (endotoxin purchased separately)	1,600 tests
N194-125	5 x 50 tests/vial lysate (endotoxin purchased separately)	250 tests
N294-125	4 x 50 tests/vial lysate, 1 vial endotoxin	200 tests
N494-125	80 x 50 tests/vial lysate, 20 vials endotoxin	4,000 tests
E194U-125	100 x 50 tests/vial lysate (endotoxin purchased separately)	5,000 tests
N186	Control Standard Endotoxin	5 vials
7360L	Control Standard Endotoxin	25 vials





# PYROGENT® Gel Clot LAL Assay

## 0.25 EU/mL Sensitivity



Cat. No.	Description	Size
N284-25	4 x 50 tests/vial lysate, 1 vial endotoxin	200 tests
N288-25	80 x 50 tests/vial lysate, 20 vials endotoxin	4,000 tests
E209U-25	100 x 50 tests/vial lysate (endotoxin purchased separately)	5,000 tests
N186	Control Standard Endotoxin	5 vials
7360L	Control Standard Endotoxin	25 vials



Often products will interfere with the endotoxin assay and the most common method of overcoming interference is dilution. This should be taken into account when determining assay sensitivity.

Maximum Valid Dilution (MVD) is the highest dilution that can be used to ensure accurate results.

Therefore, using a more sensitive assay, you increase the MVD for the sample.



# How to determine which lysate sensitivity is needed

**MVD = Endotoxin Release Limit**

**$\lambda$**

**$\lambda$  = label claim for gel clot lysate or lowest standard for quantitative assays**

Of  
mo  
dil  
ass

Endotoxin assay and the  
reference is  
when determining

Maximum Valid Dilution (MVD) is the highest dilution that can be used to ensure accurate results.

Therefore, using a more sensitive assay, you increase the MVD for the sample.



Often products will interfere with the endotoxin assay and the most common method of overcoming interference is dilution. This should be taken into account when determining assay sensitivity.

Maximum Valid Dilution (MVD) is the highest dilution that can be used to ensure accurate results.

Therefore, using a more sensitive assay, you increase the MVD for the sample.



# How to Determine Which Lysate Sensitivity is Needed

**MVD = Endotoxin Release Limit**

**$\lambda$**

**$\lambda$  = label claim for gel clot lysate or lowest standard for quantitative assays**

Of  
mo  
dil  
ass

Endotoxin assay and the  
reference is  
when determining

Maximum Valid Dilution (MVD) is the highest dilution that can be used to ensure accurate results.

Therefore, using a more sensitive assay, you increase the MVD for the sample.



Often products will interfere with the endotoxin assay and the most common method of overcoming interference is dilution. This should be taken into account when determining assay sensitivity.

Maximum Valid Dilution (MVD) is the highest dilution that can be used to ensure accurate results.

Therefore, using a more sensitive assay, you increase the MVD for the sample.



# How to Determine Which Lysate Sensitivity is Needed

**MVD = Endotoxin Release Limit**

**$\lambda$**

**$\lambda$  = label claim for gel clot lysate or lowest standard for quantitative assays**

Of  
mo  
dil  
ass

Endotoxin assay and the  
reference is  
when determining

Maximum Valid Dilution (MVD) is the highest dilution that can be used to ensure accurate results.

Therefore, using a more sensitive assay, you increase the MVD for the sample.





Often products will interfere with the endotoxin assay and the most common method of overcoming interference is dilution. This should be taken into account when determining assay sensitivity.

Maximum Valid Dilution (MVD) is the highest dilution that can be used to ensure accurate results.

Therefore, using a more sensitive assay, you increase the MVD for the sample.



# How to Determine Which Lysate Sensitivity Is Needed

**MVD = Endotoxin Release Limit**

**$\lambda$**

**$\lambda$  = label claim for gel clot lysate or lowest  
standard for quantitative assays**

Of  
mo  
dil  
ass

Endotoxin assay and the  
reference is  
when determining

Maximum Valid Dilution (MVD) is the highest dilution that can be used to ensure accurate results.

Therefore, using a more sensitive assay, you increase the MVD for the sample.



Often products will interfere with the endotoxin assay and the most common method of overcoming interference is dilution. This should be taken into account when determining assay sensitivity.

Maximum Valid Dilution (MVD) is the highest dilution that can be used to ensure accurate results.

Therefore, using a more sensitive assay, you increase the MVD for the sample.



# How to Determine Which Lysate Sensitivity Is Needed

**MVD = Endotoxin Release Limit**

**$\lambda$**

**$\lambda$  = label claim for gel clot lysate or lowest standard for quantitative assays**

Of  
mo  
dil  
ass

Endotoxin assay and the  
reference is  
when determining

Maximum Valid Dilution (MVD) is the highest dilution that can be used to ensure accurate results.

Therefore, using a more sensitive assay, you increase the MVD for the sample.



All trademarks belong to Lonza, and are registered in the USA, EU and/or CH or belong to third-party owners and are used only for informational purposes. All third-party copyrights have been reproduced with permission from their owners. The information contained herein is believed to be correct, however, no warranty is made, either expressed or implied. For more details: <http://www.lonza.com/legal>.  
© 2024 Lonza. RT-PP050 02/2024. All rights reserved.

