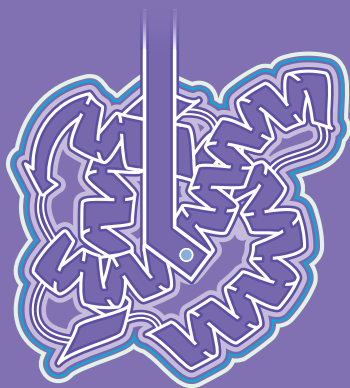


## Speed Past the Twists and Turns in Protein Research

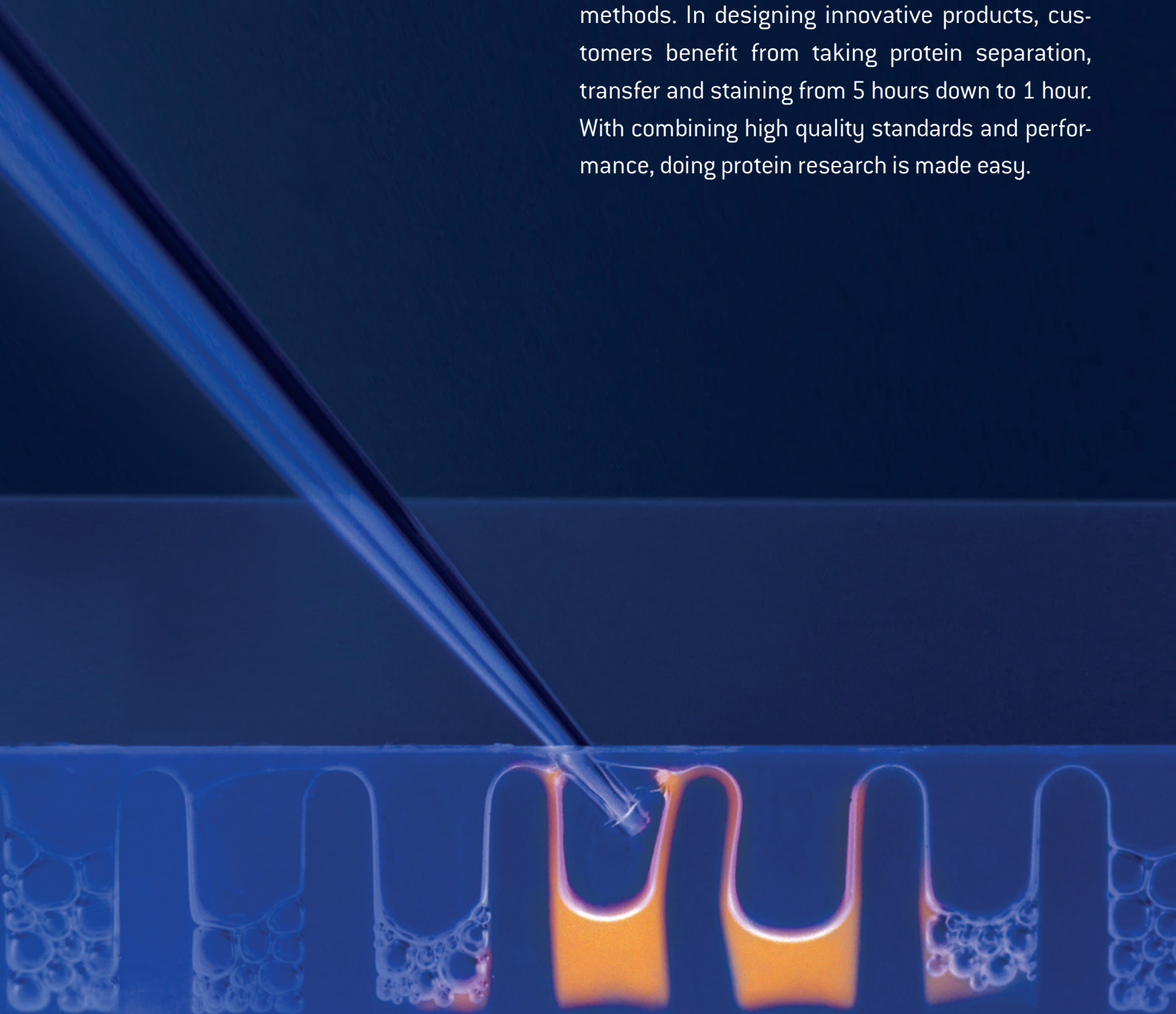


Protein Electrophoresis



## Protein Electrophoresis from Lonza

With over 50 years experience in the separation of molecular fragments, Lonza offers novel protein solutions to help researchers beyond classical methods. In designing innovative products, customers benefit from taking protein separation, transfer and staining from 5 hours down to 1 hour. With combining high quality standards and performance, doing protein research is made easy.



## Content

Introduction	2
PAGEr™ EX Fast Protein Staining Kit	3
PAGEr™ EX Fast Protein Transfer Kit	3
PAGEr™ EX Gels	4
ProSieve™ EX Safe Stain	5
ProSieve™ EX Stain Enhancer	5
ProSieve™ EX Running Buffer	6
ProSieve™ EX Western Blot Transfer Buffer	6
PAGEr™ Minigel Chamber	7
PAGEr™ Precast Gels	8
ProSieve™ Color Protein Markers	10
ProSieve™ Protein Markers	10
ProSieve™ ProTrack™ Dual Color Protein Loading Buffer	11
ProSieve™ Blue Protein Staining Solution	11
SYPRO® Protein Gel Stains	12
AccuGENE™ Electrophoresis Buffers	13

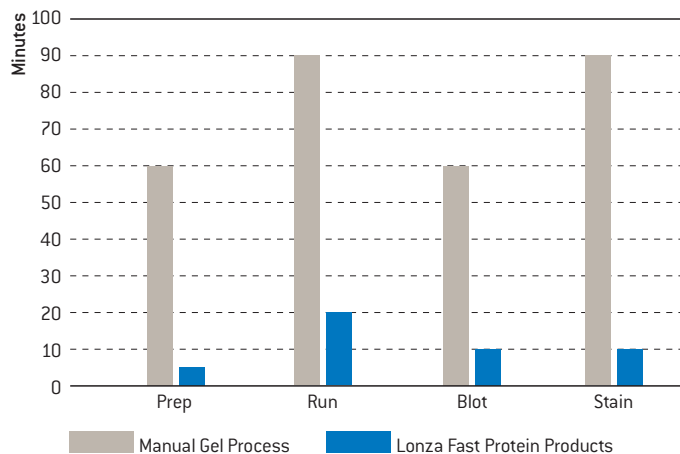
## A Faster Solution For Protein Separation, Transfer, Blot, and Staining

Lonza's PAGEr™ EX and ProSieve™ EX Fast Protein products address the need for faster, more efficient, and reliable solutions for protein electrophoresis. Ultimately, these products take protein separation, Western blot and transfer, plus staining from over 5 hours down to less than 1 hour.

Each individual component offers a unique solution and can be incorporated into your current protein process:

- **PAGEr™ EX Gels** are designed for fast 20–25 minute separation with a 12 month shelf life using ProSieve™ EX Running Buffer
- **ProSieve™ EX Safe Stain** takes your staining process down to just 1 step in 10 minutes
- **ProSieve™ EX Stain Enhancer** is combined with Coomassie™ for a cost effective 15 minute staining
- **ProSieve™ EX Western Blot Transfer Buffer** can be used with any Tris-glycine gels for a 10 minute transfer
- **ProSieve™ EX Running Buffer** provides <30 minute separation for any Tris-glycine gels
- **ProSieve™ QuadColor™ Protein Marker** provides accurate confirmation of protein transfer in the range of 4.6 kDa–300 kDa

Lonza's Fast Protein Products save time in each stage of protein processing.





## Introductory Kits for Protein Transfer, Blotting, and Staining

### Separate, blot and stain faster!

PAGEr™ EX Protein Staining Kits and PAGEr™ EX Protein Transfer/Western Blot Kits are trial-size kits designed to combine the total solution for the ultimate fast separation with staining and transfer in less than 30 minutes.

These convenient all-in-one kits are a low cost option designed to save you time and simplify your protein electrophoresis process.

#### PAGEr™ EX Protein Staining Kit

- 10 minute, 1 step, safe protein staining method, with a 20 minute run
- This kit contains: 2 PAGEr™ EX Gels, ProSieve™ EX Running Buffer, ProSieve™ EX Safe Stain and a ProSieve™ QuadColor™ Marker



#### PAGEr™ EX Protein Transfer/Western Blot Kit

- 10 minute protein transfer time, with a 20 minute run.
- This kit includes: 2 PAGEr™ EX Gels, ProSieve™ EX Running Buffer, ProSieve™ EX Western Blot Transfer Buffer and a ProSieve™ QuadColor™ Marker

### Ordering information

Fisher Scientific Cat No.	Product	Description	Size	Well
BMA00201741	PAGEr™ EX Protein Staining Kit	Mid/High range 10–350 kDa	9 × 10 cm	12
BMA00201748	PAGEr™ EX Protein Staining Kit	Mid/High range 10–350 kDa	10 × 10 cm	12
BMA00201745	PAGEr™ EX Protein Staining Kit	Low/Mid range 5–225 kDa	9 × 10 cm	12
BMA00201746	PAGEr™ EX Protein Staining Kit	Low/Mid range 5–225 kDa	10 × 10 cm	12
BMA00201747	PAGEr™ EX Protein Transfer/Western Blot Kit	Mid/High range 10–350 kDa	9 × 10 cm	12
BMA00201742	PAGEr™ EX Protein Transfer/Western Blot Kit	Mid/High range 10–350 kDa	10 × 10 cm	12
BMA00201743	PAGEr™ EX Protein Transfer/Western Blot Kit	Low/Mid range 5–225 kDa	9 × 10 cm	12
BMA00201744	PAGEr™ EX Protein Transfer/Western Blot Kit	Low/Mid range 5–225 kDa	10 × 10 cm	12

## PAGEr™ EX Gels

### Fast, long shelf life option

PAGEr™ EX Gels are the ultimate protein precast gel that offer faster separation in less than 30 minutes, 12 month shelf life, high resolution quality, and unique size separation range that consolidates band resolution to only few gels.

Benefits include:

- Fast separation, 20–25 minutes
- 1 year shelf life
- Designed for use with ProSieve™ EX Running Buffer
- Fit most chambers
- Easy to use



### PAGEr™ EX Gels performance and specifications

Separation	Equivalent concentration	Well formats	Dimensions	Buffer	Chambers
Mid/High range 10–350 kDa	4–12%	12 well or 16 well	9 × 10 cm or 10 × 10 cm	ProSieve™ EX Running Buffer	Most standard protein chambers
Low/Mid range 5–225 kDa	10%	12 well or 16 well	9 × 10 cm or 10 × 10 cm		

**Chamber compatibility** – See the table on page 9

### Ordering information

Fisher Scientific Cat No.	Product	Description	Size	Well
BMA59722	PAGEr™ EX Gels, 10 gels/box	Mid/High range 10–350 kDa	10 × 10 cm	12
BMA58722	PAGEr™ EX Gels, 10 gels/box	Mid/High range 10–350 kDa	9 × 10 cm	12
BMA59724	PAGEr™ EX Gels, 10 gels/box	Mid/High range 10–350 kDa	10 × 10 cm	16
BMA58724	PAGEr™ EX Gels, 10 gels/box	Mid/High range 10–350 kDa	9 × 10 cm	16
BMA59702	PAGEr™ EX Gels, 10 gels/box	Low/Mid range 5–225 kDa	10 × 10 cm	12
BMA58702	PAGEr™ EX Gels, 10 gels/box	Low/Mid range 5–225 kDa	9 × 10 cm	12
BMA59714	PAGEr™ EX Gels, 10 gels/box	Low/Mid range 5–225 kDa	10 × 10 cm	16
BMA58714	PAGEr™ EX Gels, 10 gels/box	Low/Mid range 5–225 kDa	9 × 10 cm	16

# ProSieve™ EX Safe Stain and ProSieve™ EX Stain Enhancer

## Revolutionary, fast and safe

These fast staining products are revolutionary for speed and process improvements. With independent features that make each product unique, choosing the right stain for your research is easy.

### ProSieve™ EX Safe Stain

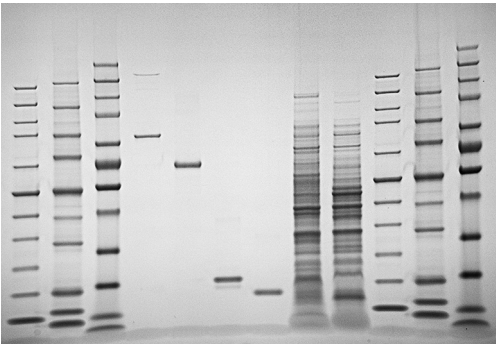
- Ultimate fast solution that provides a 1 step, safe stain in 10 minutes

### ProSieve™ EX Stain Enhancer

- Provides a cost effective option for Coomassie™ stain users, 2 steps in 15 minutes

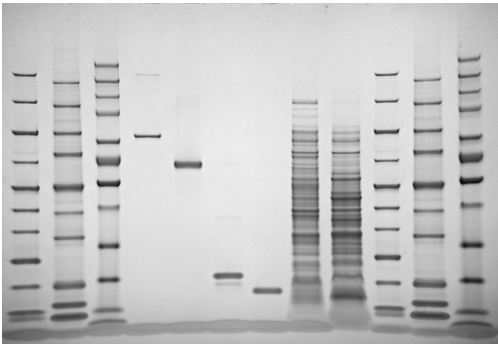


## ProSieve™ EX Safe Stain with PAGEr™ EX Gels offers better results in half the time



20 minute run with PAGEr™ EX Gels and ProSieve™ EX Running Buffer at 250V, 10 minutes ProSieve™ EX Safe Stain , (total 30 minutes)

## ProSieve™ EX Stain Enhancer



PAGEr™ EX Gels stained using ProSieve™ EX Stain Enhancer and 0.0125% Coomassie™ Brilliant Blue G in water: 20 minute gel run with ProSieve™ EX Running Buffer at 250V, 10 minutes ProSieve™ EX Stain Enhancer, 5 minutes Coomassie™ Brilliant Blue (total 35 minutes)

## Ordering information

Fisher Scientific Cat No.	Product	Size
BMA00201455	ProSieve™ EX Safe Stain	1 L
BMA00201369	ProSieve™ Stain Enhancer	1 L

## ProSieve™ EX Running and Western Blot Transfer Buffers

### Simple, sharp and fast

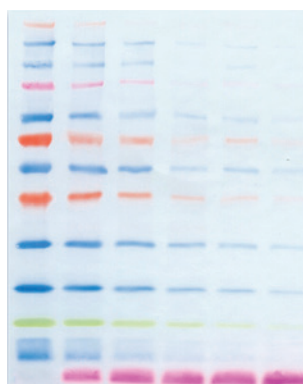
New protein separation and Western blot transfer buffers are modified formulations that perform just like Tris-glycine, but significantly accelerate run and transfer times without compromising results. The Laemmli gel system, based on Tris-glycine SDS buffers, is the recognized as the gold standard for analyzing proteins by PAGE. For over 40 years, efforts to improve the time and efficiency of this method have been limited...until now.

Overall, the standard 2-hour method for protein separation and transfer can be reduced to less than 30 minutes including:

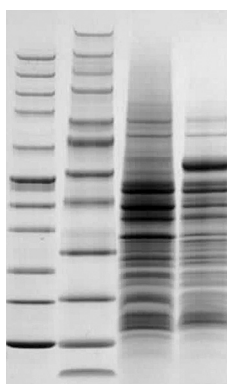
- Separation in less than 30 minutes
- Transfer in 10 minutes
- Compatibility with standard gel systems and protocols
- Razor sharp resolution



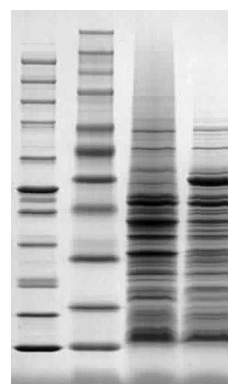
10 minute transfer with ProSieve™ EX Buffer



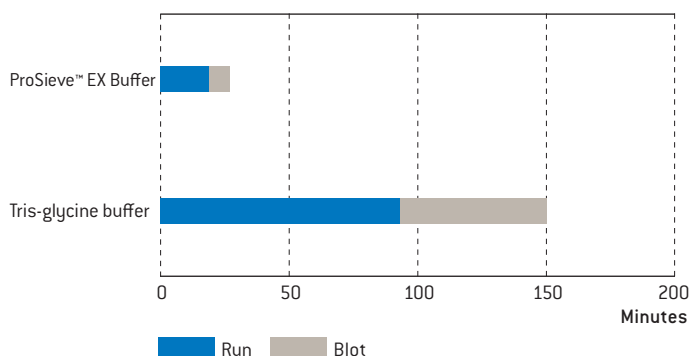
60 minute transfer with standard transfer buffer



15 minute run with ProSieve™ EX Buffer



40 minute run with Tris-glycine Buffer



### Ordering information

Fisher Scientific Cat No.	Product	Size
BMA00200309	ProSieve™ EX Western Blot/Transfer Buffer	1 L
BMA00200307	ProSieve™ EX Running Buffer	1 L
BMA00200308	ProSieve™ EX Running Buffer	4 L
BMA00193837	ProSieve™ QuadColor™ Protein Marker	500 µl



# PAGEr™ Minigel Chamber

## Sharp performance and simplicity

### PAGEr™ Minigel Chamber

The PAGEr™ Minigel Chamber is the easiest chamber you will ever use. The simple, lock-in-place core design assures a tight, flat fit. No need to remove the core, simply insert gels, close the clamps, fill with buffer and run. Runs one or two PAGEr™ Gels and accommodates a tank blotting module.

- Easy-to-use core eliminates leaking and minimizes handling
- Perfect fit with 9 cm × 10 cm and 10 cm × 10 cm PAGEr™ EX and PAGEr™ Gels
- Even electrical force ensures straight lanes

### PAGEr™ Blot Module

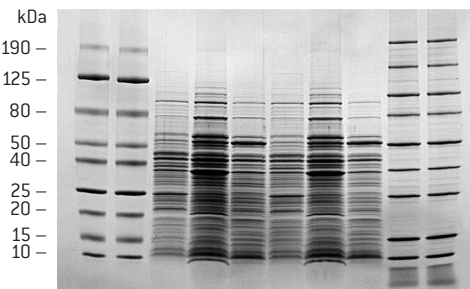
The PAGEr™ Blot Module works directly in the PAGEr™ Minigel Chamber and provides exceptional blotting with a fast, simple protocol.

- Color-coded cassettes ensure proper orientation of the gel during transfer
- Transfer time – 90 minutes or less
- Hinged cassette design for easy assembly

The system can be purchased as a kit, including the PAGEr™ Minigel Chamber, PAGEr™ Blot Module and sponge pads, or components may be purchased separately.



## PAGEr™ Gel Minigel Chamber performance



ProSieve™ Color Protein Markers and *E. coli* lysate run on a PAGEr™ Gel at 200V for 60 minutes in the PAGEr™ Minigel Chamber.

## Ordering information

Fisher Scientific Cat No.	Product
BMA59905	PAGEr™ Minigel Chamber
BMA59906	PAGEr™ Tank Blot Module
BMA59907	PAGEr™ Minigel Chamber and Blot Module Kit*

\* Includes chamber, blotting cassette, and sponge pads. {8/pack}. Contact Scientific Support for information about replacements parts.

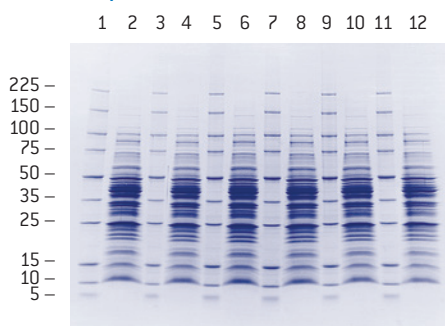
## PAGEr™ Precast Gels

### Sharp, reliable, easy-to-use

PAGEr™ Gels are easy-to-use protein Tris-glycine minigels that offer sharp resolution and consistent protein transfer. Choose from multiple options for denatured and native protein separation over a wide molecular weight range, in an array of configurations in both 9 cm × 10 cm and 10 cm × 10 cm sizes to fit popular chambers.

- Razor sharp resolution – crisp separation of proteins 5 kDa – 250 kDa
- Easy-to-use – marked sample lanes for easy loading and simple twist open design
- Versatile – multiple well formats and gel concentrations in 2 sizes to fit most chambers
- Tris-glycine buffer – traditional Laemmli separation
- Fresh – we ship fresh gels every time for guaranteed performance

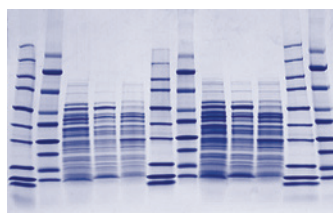
### Protein separation with a PAGEr™ Precast Gel



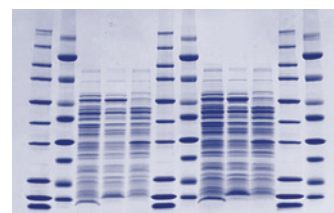
Separations on a 4 – 20% PAGEr™ Precast Gel.

ProSieve™ Protein Markers lanes 1, 3, 5, 7, 9, and 11. *E. coli* extract in lanes 2, 4, 6, 8, 10 and 12. Proteins detected by Coomassie™ Brilliant Blue stain.

### Competitor gel



### PAGEr™ Precast Gel



Resolution comparison of 4 – 20 % Coomassie™ stained gels. Samples include a repeating pattern of ProSieve™ Protein Marker, ProSieve™ Color Protein Marker and *E. coli* lysates.

### Ordering information – PAGEr™ Gels



550 µl sample, or  
7 cm IPG strip,  
12 µl marker



30 µl sample  
12 µl marker



32 µl



20 µl



14 µl



14 µl

10 gels per box/ Concentration	Cassette size (cm)	Fisher Scientific Cat. No. 2D-well+	Fisher Scientific Cat. No. 8 + 1 well*	Fisher Scientific Cat. No. 10-well	Fisher Scientific Cat. No. 12-well	Fisher Scientific Cat. No. 16-well	Fisher Scientific Cat. No. 17-well*
4 – 12% gradient	9 x 10 10 x 10	— —	— —	BMA58520 BMA59520	BMA58522 BMA59522	BMA58524 BMA59524	— —
4 – 20% gradient	9 x 10 10 x 10	— BMA59557	BMA58551 BMA59551	BMA58511 BMA59511	BMA58505 BMA59505	BMA58517 BMA59517	BMA58545 BMA59545
8 – 16% gradient	9 x 10 10 x 10	— —	BMA58562 BMA59562	BMA58519 BMA59519	BMA58521 BMA59521	BMA58523 BMA59523	— —
10 – 20% gradient	9 x 10 10 x 10	— —	— —	BMA58512 BMA59512	BMA58506 BMA59506	BMA58518 BMA59518	— —
10%	9 x 10 10 x 10	— —	BMA58548 BMA59548	BMA58508 BMA59508	BMA58502 BMA59502	BMA58514 BMA59514	— —

\* 8+1-well and 17-well gels are multichannel pipette compatible

## Specifications

Dimensions	Cassette thickness	Gel dimensions
9 cm × 10 cm (L × W)	0.49 cm	7.1 × 8.3 (L × W) × 0.1 cm
10 cm × 10 cm (L × W)	0.55 cm	8.1 × 8.3 (L × W) × 0.1 cm
Gel matrix/buffer:	Polyacrylamide/Tris-glycine Note: Gels do not contain SDS. Add SDS to sample buffer to create denaturing running conditions.	
Stacking gel:	4% stacking gel	
Well format:	2D well, 8+1 well*, 10 well, 12 well, 16 well, 17 well* *multichannel pipette compatible well formats	
Cassette:	Plastic	
Storage/shelf life:	2 °C – 8 °C for 3 months from date of manufacture Guaranteed 10 weeks upon receipt	

## Chamber compatibility

Manufacturer & model	Gel size 9 × 10 cm	Gel size 10 × 10 cm
<b>Lonza</b>		
PAGEr™ Minigel Chamber	■	■
<b>Fisher Scientific</b>		
FisherBiotech® FB-VE 10-1	—	■
FisherBiotech® FB-VE 12-1	—	■
FisherBiotech® EC 120-2	■	■
<b>Invitrogen/Novex®</b>		
XCell SureLock® MiniCell	■	■
XCell I & II	■	■
<b>Bio-Rad®</b>		
Mini-PROTEAN® I, II & 3	■	—
Ready Gel® Cell	■	—
<b>Hoefer® Mighty Small</b>		
SE 250	■	■
SE 260	■	■
SE 280	■	■
<b>Biometra®</b>		
Mini V	■	—
<b>Sigma Aldrich</b>		
Mini Techware	■	■
<b>CBS Scientific</b>		
MGV System	■	■
<b>Owl Separation Systems</b>		
Penguin™ P8DS-1	—	■
<b>Daiichi/ISS</b>		
2 & 6 System	—	■
<b>Zaxis</b>		
System 200	—	■

Some chambers may require adjustment for optimal fit with PAGEr™ Gels.  
Contact Scientific Support for details.

## Separation range in PAGEr™ Tris-glycine gels

Polyacrylamide concentration	Size separation range
7.5%	50 kDa – 200 kDa
10%	25 kDa – 200 kDa
12%	20 kDa – 200 kDa
15%	10 kDa – 50 kDa
4 – 20%	5 kDa – 200 kDa
10 – 20%	5 kDa – 150 kDa
4 – 12%	25 kDa – 250 kDa
8 – 16%	15 kDa – 200 kDa

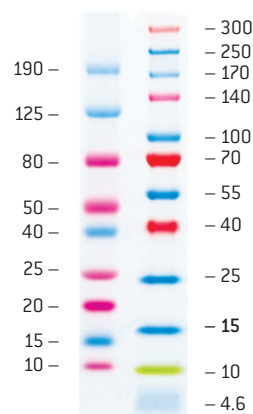
## ProSieve™ Color Protein Markers

### Sharp performance and simplicity

ProSieve™ Color Protein Markers are an easy method for monitoring protein separation prior to staining, and provide accurate confirmation of protein transfer in Western blotting.

- Convenient – just add water and load
- Sharp – multi-colored, readily identifiable band pattern
- Verify protein transfer following Western blotting

### ProSieve™ Color Protein Marker



Typical Results

### Ordering information

Fisher Scientific Cat No.	Product	Range	Size
BMA50552	ProSieve™ Color Protein Marker (lyophilized, just add water and load)	10 kDa–190 kDa	100 µl
BMA50550		10 kDa–190 kDa	500 µl
BMA00193837	ProSieve™ QuadColor™ Protein Marker (thaw and load)	4.6 kDa–300 kDa	500 µl

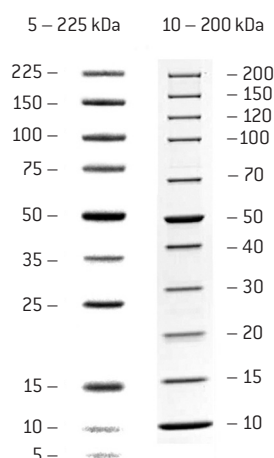
## ProSieve™ Protein Markers

### Sharp, accurate sizing of proteins

ProSieve™ Protein Markers are designed for accurate sizing of proteins 5 kDa to 225 kDa. The 50 kDa band is double-intensity for easy identification.

- Simple – wide distribution of exact masses simplifies size determination
- Accurate – recombinant proteins do not contain oligosaccharides that can cause anomalous migration, heterogeneous “fuzzy” bands, and inaccurate size estimation

### Performance of ProSieve™ Protein Markers



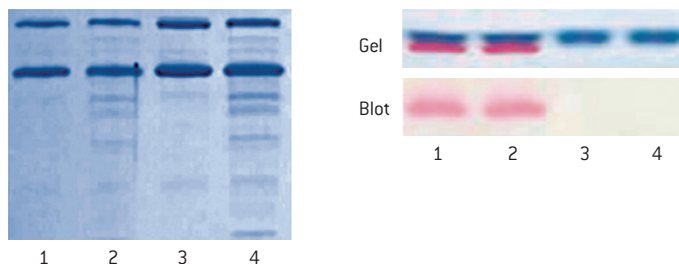
### Ordering information

Fisher Scientific Cat No.	Product	Range	Size
BMA50547	ProSieve™ Protein Marker	5 kDa–225 kDa	500 µl
BMA00193839	ProSieve™ Unstained Protein Marker II	10 kDa–200 kDa	500 µl

## ProSieve™ ProTrack™ Dual Color Protein Loading Buffer

### Protect and track protein samples

- Protects proteins from degradation during sample prep
- Two colors for tracking electrophoresis progress (blue) and monitoring Western transfer (pink)
- Contains SDS and DTT for complete protein denaturing



Lanes 1 and 3 are proteins protected by ProSieve™ ProTrack™ Dual Color Loading Buffer, lanes 2 and 4 are proteins prepared and run in a standard loading buffer.

ProSieve™ ProTrack™ Blue Dye monitors protein separation on the gel, while the pink dye confirms transfer of the proteins onto the blot.

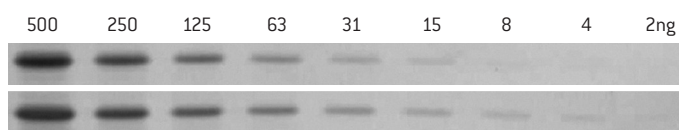
### Ordering information

Fisher Scientific Cat No.	Product	Applications	Size
BMA00193861	ProSieve™ ProTrack™ Dual Color Protein Loading Buffer	1000 loads	5 ml

## ProSieve™ Blue Protein Staining Solution

### Improved Coomassie™ dye

- Ready-to-use in a fast, 25–40 minute protocol
- No destaining required. Does not contain methanol or acetic acid
- Proteins stain to an endpoint, overstaining is not possible
- Detect 2–5 ng of protein
- Broad, linear dynamic range
- Can be reused up to 3 times without a decrease in sensitivity



Comparison of detection sensitivity between standard Coomassie™ stain (upper bands) and ProSieve™ Blue Protein Staining Solution (lower bands).

### Ordering information

Fisher Scientific Cat No.	Product	Size
BMA00193862	ProSieve™ Blue Protein Staining Solution	1 L



## SYPRO® Protein Gel Stains

### Fast, sensitive, easy-to-use fluorescent gel stains

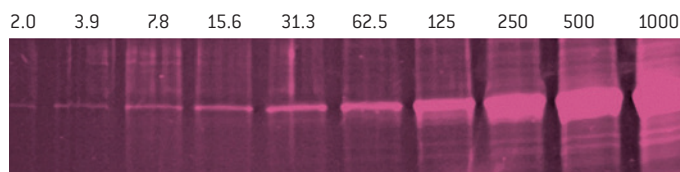
SYPRO® Stains are exquisitely sensitive and simple fluorescent protein gel stains that rival the sensitivity of the best silver stains for a range of applications from 2D gel staining to staining gels prior to western blotting.

- **SYPRO® Ruby Stain** is the ideal stain for 2D analysis, offering a linear quantitation range of over three orders of magnitude
- **SYPRO® Red Stain** is the fastest, easiest stain for routine protein detection, requiring no fixation or destain
- **SYPRO® Tangerine Stain** does not interfere with protein activity and is ideal for staining gels prior to Western transfer
- **SYPRO® Ruby Blot Stain** offers sensitivity levels that rival colloidal stains for detecting proteins on blots

### Select the Best Stain for your Application

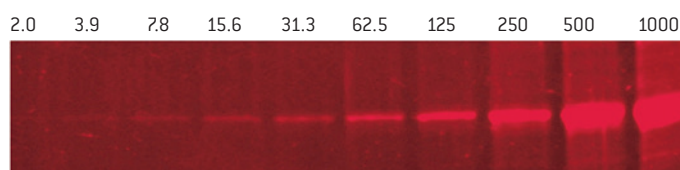
Application	SYPRO® Ruby	SYPRO® Tangerine	SYPRO® Red
High performance staining	■	–	■
Staining prior to western blotting	–	■	–
2D Electrophoresis	■	–	–
Edman microsequencing	■	■	■
Mass spectrometry	■	■	■
Quantitation	■	■	■
Zymography	■	■	■
Electroelution	■	■	■
Membrane staining	■	–	–
Protein expression	■	–	–
Detection prior to immunostaining	■	■	–
Difficult to stain proteins	■	–	–
IEF Gels	■	–	–

### SYPRO® Ruby Stain



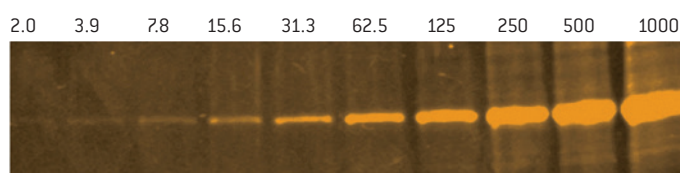
### SYPRO® Red Stain

Diluted in PBS (Polaroid® photo UV light)

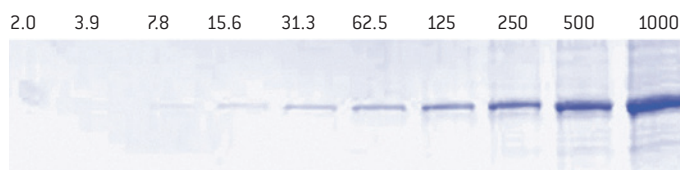


### SYPRO® Tangerine Stain

Diluted in PBS (Polaroid® photo UV light)



### Coomassie™ Brilliant Blue Stain



Serial dilutions of Lonza's ProSieve™ Protein Marker 50 kDa band on 12% PAGEr™ Gold Precast Gels. Protein level indicated in nanograms.

### Ordering information

Fisher Scientific Cat No.	Product	Size
BMA50562	SYPRO® Ruby Protein Gel Stain	1 L
BMA50563	SYPRO® Ruby Protein Gel Stain	5 L
BMA50564	SYPRO® Ruby Protein Gel Stain	200 ml
BMA50565	SYPRO® Ruby Protein Blot Stain	200 ml
BMA50556	SYPRO® Tangerine Protein Gel Stain	500 µl
BMA50542	SYPRO® Red Protein Gel Stain	10 x 50 µl
BMA50543	SYPRO® Red Protein Gel Stain	500 µl
BMA50540	SYPRO® Protein Gel Stain Photographic Filter	3" square

## AccuGENE™ Electrophoresis Buffers

### Optimized performance from a closed reagent system

AccuGENE™ Buffers are prepared with high quality reagents and formulated to match PAGEr™ Precast Gels. These buffers use 18 megohm water. Products are filtered using a 0.2-micron filter.

- Reliable – manufactured according to strict quality control standards to ensure lot-to-lot consistency
- Flexible – customized solutions are available to meet individual needs

### Ordering information

Fisher Scientific Cat No.	Product	Size
BMA50879	AccuGENE™ 10X Tris-glycine Buffer 0.25 M tris base, 1.92 M glycine	1 L
BMA50881	AccuGENE™ 10X Tris-glycine Buffer 0.25 M tris base, 1.92 M glycine	4 L
BMA50880	AccuGENE™ 10X Tris-glycine SDS Buffer 0.25 M tris base, 1.92 M glycine 1% SDS	1 L
BMA50882	AccuGENE™ 10X Tris-glycine SDS Buffer 0.25 M tris base, 1.92 M glycine 1% SDS	4 L



## Contact Information

To order or request a sample:



**Fisher Scientific**

Customer Service: 800 766 7000  
To Fax an Order: 800 926 1166  
Online Ordering: [www.fishersci.com](http://www.fishersci.com)

BN0530134

### North America

Scientific Support: 800 521 0390 (toll free)  
[scientific.support@lonza.com](mailto:scientific.support@lonza.com)

---

For research use only. Not for use in diagnostic procedures.

SYPRO is a trademark of Molecular Probes, Inc. Bio-Rad, MiniProtein and Ready Gel are trademarks of Bio-Rad Laboratories, Inc. Penguin is a trademark of Thermo Fisher Scientific, Inc. NOVEX and XCell SureLock are trademarks of Life Technologies Corporation. Coomassie is a trademark of Imperial Chemicals Industries PLC. Biometra is a trademark of Biometra Biomedizinische Analytik GmbH. FisherBiotech is a trademark of Fisher Scientific Company. Hoefer is a trademark of Hoefer Scientific Instruments. Polaroid is a registered trademark of Polaroid Corporation

ProSieve™ EX Stain Enhancer, ProSieve™ QuadColor™ Protein Marker and ProSieve™ EX Stain are manufactured for Lonza. ProSieve™ Buffer technology is licensed from DGElectrosystem, patents pending.

Unless otherwise noted, all trademarks herein are marks of the Lonza Group Ltd or its affiliates. The information contained herein is believed to be correct and corresponds to the latest state of scientific and technical knowledge. However, no warranty is made, either expressed or implied, regarding its accuracy or the results to be obtained from the use of such information and no warranty is expressed or implied concerning the use of these products. The buyer assumes all risks of use and/or handling. Any user must make his own determination and satisfy himself that the products supplied by Lonza Group Ltd or its affiliates and the information and recommendations given by Lonza Group Ltd or its affiliates are (i) suitable for intended process or purpose, (ii) in compliance with environmental, health and safety regulations, and (iii) will not infringe any third party's intellectual property rights.

