



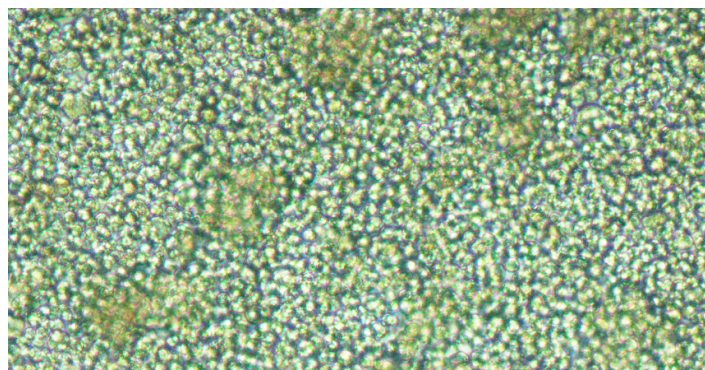
PowerCHO Advance™ Medium

Advance your CHO Cell Performance



For Exceptional Growth and Protein Yield

Optimized for therapeutic protein research, Lonza's new PowerCHO Advance™ Medium provides better growth promotion, easy scale-up, and higher titer. This medium can be used for a variety of applications including toxicity screening, gene expression, pharmaceutical research and basic CHO research. It supports small-scale trials in shaker flasks to large-scale protein production in bioreactors. CHO cells are the cell line of choice for protein production due to their rapid growth and high protein yield. Adding PowerCHO Advance™ Medium to your CHO cultures will help low- and high-producing clones perform to their utmost potential.

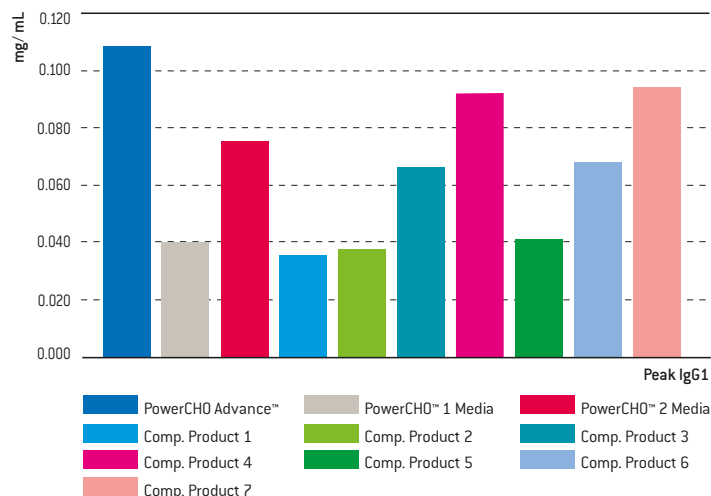


PowerCHO Advance™ Medium is a chemically defined, non-animal origin media that supports the expansion of CHO cells under serum-free conditions. The balanced formulation allows users to maintain high viability (greater than 90%), even at high cell densities, while it has also been shown to provide higher protein titer when compared with leading media formulations on the market.

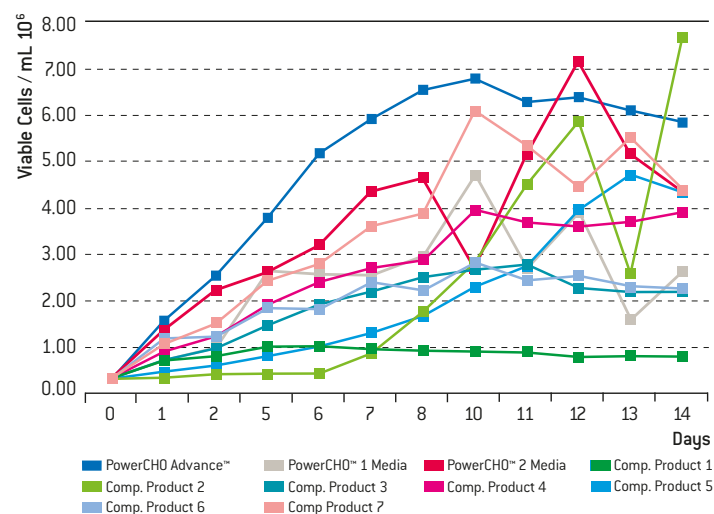
Features of PowerCHO Advance™ Medium:

- Regulatory friendly
- Allows for easy scalability
- Easily paired with fed batch systems for scale-up studies
- Easy filterability

PowerCHO Advance™ Medium Productivity Compared to Competitive Media



PowerCHO Advance™ vs Competitive Media



Contact Information

North America

Customer Service: +1 800 638 8174 (toll free)
 order.us@lonza.com
 Scientific Support: +1 800 521 0390 (toll free)
 scientific.support@lonza.com

Europe

Customer Service: +32 87 321 611
 order.europe@lonza.com
 Scientific Support: +32 87 321 611
 scientific.support.eu@lonza.com

International

Contact your local Lonza distributor
 Customer Service: +1 301 898 7025
 Fax: +1 301 845 8291
 scientific.support@lonza.com

International Offices

Australia	+61 3 9550 0883
Belgium	+32 87 321 611
Brazil	+55 11 2069 8800
France	0800 91 19 81 (toll free)
Germany	0800 182 52 87 (toll free)
India	+91 22 4342 4000
Japan	+81 3 6264 0660
Luxemburg	+32 87 321 611
Singapore	+65 6521 4379
The Netherlands	0800 022 4525 (toll free)
United Kingdom	0808 234 97 88 (toll free)

Lonza Walkersville, Inc. – Walkersville, MD 21793

For research use only. Not for use in diagnostic procedures.
 All trademarks belong to Lonza or its affiliates or to their respective third party owners. The information contained herein is believed to be correct and corresponds to the latest state of scientific and technical knowledge. However, no warranty is made, either expressed or implied, regarding its accuracy or the results to be obtained from the use of such information and no warranty is expressed or implied concerning the use of these products. The buyer assumes all risks of use and/or handling. Any user must make his own determination and satisfy himself that the products supplied by Lonza Group Ltd or its affiliates and the information and recommendations given by Lonza Group Ltd or its affiliates are (i) suitable for intended process or purpose, (ii) in compliance with environmental, health and safety regulations, and (iii) will not infringe any third party's intellectual property rights.

Visit www.lonza.com/PowerCHO for additional information.

©2019 Lonza. All rights reserved.
 CD-TS079 03/19

www.lonza.com/research
www.lonza.com/powercho