

# TheraPRO<sup>®</sup> CHO Media System



## Protein production made simple

As the versatility and efficiency of antibody therapeutics continues to transform the healthcare industry, optimization of workflow and ease-of-use has become pivotal in accelerating time to market for new treatments.

The TheraPRO<sup>®</sup> CHO Media System is a chemically-defined, animal component-free formulation proven to optimize productivity and product quality when used in conjunction with the GS-CHO cell line, the prevalent protein expression system worldwide for therapeutic proteins and antibodies.

With speed-to-market in mind, the TheraPRO<sup>®</sup> CHO Media System is scalable from cell line development through bioprocess manufacturing and supported by subject matter experts with extensive experience in troubleshooting production processes. All components of the system are manufactured in ISO 13485 certified facilities in accordance with GMP and are accompanied by a Drug Master File (DMF) and assistance with regulatory submissions

### Why choose TheraPRO<sup>®</sup> CHO Media System?

- **Proven platform:** The TheraPRO<sup>®</sup> CHO Media System provides for rapid process development and speeds products to market through the utilization of a purpose built, streamlined media set. It is designed for use with a broad spectrum of GS-CHO cell lines, including Lonza platforms with an excellent track record of success, with many commercial products on the market and many more in the clinical pipeline.
- **Outstanding product performance:** Achieve >4.5 g/L of high quality protein and >90% cell viability when pairing the TheraPRO<sup>®</sup> CHO Media System with Lonza's established cell lines. The TheraPRO<sup>®</sup> CHO Media System provide for a simple, chemically defined and animal component free, two part production media set, consisting of one production medium and one feed. It provide consistently low antibody aggregation with even the most difficult to produce molecules.
- **Quality and expertise** – All components are manufactured in accordance with GMP and in ISO 13485 certified facilities, ensuring quality and traceability, with support from Lonza's subject matter experts.

### TheraPRO® CHO Media System attributes:

- Production system: 1 part powder medium and 1 part powder feed available in a range of scale ready pack sizes
- Expansion and cloning: Ready-to-use, 1X liquid formulations

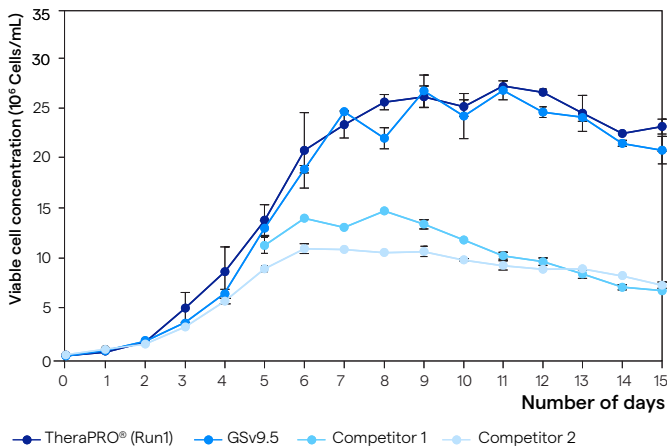
### Features and benefits

- Easy to use CHO medium solution
- Simplifies upstream processing and reduces preparation time
- Speeds time to market
- Achieves > 4.5 g/L of high quality protein and >90% cell viability
- Subject matter experts are on hand to provide technical support where needed

### Ordering and catalog information

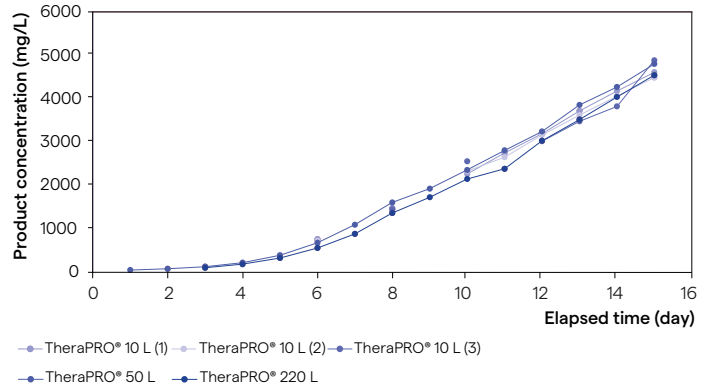
Part code	Description	Size
BESP1609Q	TheraPRO® CHO Cloning Medium	1 L
BESP1630Q	TheraPRO® CHO Expansion Medium	1 L
BESP1571B	TheraPRO® CHO Production Medium	5 L
BESP1603BX	TheraPRO® CHO Feed	5 L

### TheraPRO® CHO Media System yields a higher VCC when compared to competitor media using same conditions



**Figure 1.** All cultures inoculated between 0.47 and 0.55 x 10<sup>6</sup> cells/mL. TheraPRO® CHO Media System (Run 1) and GSv9.5 both shows similar trend, achieving maximum VCC of nearly 28 million cells/mL. Competitor 1 only grew to approx. 15 million cells/mL and Competitor 2 plateaued out at 12 million cells/mL.

### Protein titer remains constant at different scales using the TheraPRO® CHO Media System



**Figure 2.** TheraPRO® CHO performance has been tested across a range of scales including 10 L, 50 L and 220 L. All scales show similar protein titer trends demonstrating TheraPRO® CHO is associated with high product quality across culture scales.

## Contact us

### North America

Customer Service: +1 800 638 8174 (toll free)  
 order.us@lonza.com  
 Scientific Support: +1 800 521 0390 (toll free)  
 scientific.support@lonza.com

### Europe

Customer Service: +32 87 321 611  
 order.europe@lonza.com  
 Scientific Support: +49 221 99199 400  
 scientific.support.eu@lonza.com

### International

Contact your local Lonza distributor  
 Customer Service: +1 301 898 7025  
 scientific.support@lonza.com

Learn more.



All trademarks belong to Lonza, and are registered in USA, EU or CH or belong to third-party owners and are used only for informational purposes. All third-party copyrights have been reproduced with permission or belong to Lonza. The information contained herein is believed to be correct and corresponds to the latest state of scientific and technical knowledge. However, no warranty is made, either expressed or implied, regarding its accuracy or the results to be obtained from the use of such information and no warranty is expressed or implied concerning the use of these products. The buyer assumes all risks of use and/or handling. Any user must make his own determination and satisfy himself that the products supplied by Lonza Group Ltd or its affiliates and the information and recommendations given by Lonza Group Ltd or its affiliates are (i) suitable for intended process or purpose, (ii) in compliance with environmental, health and safety regulations, and (iii) will not infringe any third party's intellectual property rights. The user bears the sole responsibility for determining the existence of any such third party rights, as well as obtaining any necessary licenses. For more details: [www.lonza.com/legal](http://www.lonza.com/legal).