



Bioscience Solutions

Clonetics™ and Poietics™ Diseased Cells

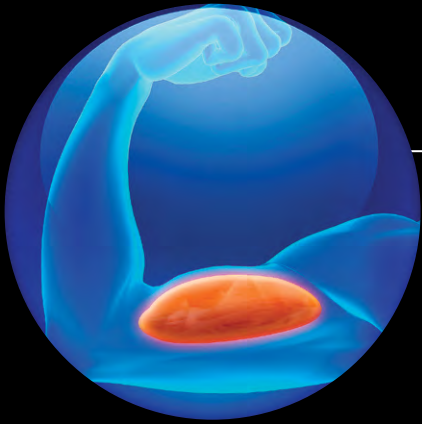
In Vivo Relevance. *In Vitro* Results.



Human Diseased Primary Cell Types – Airway

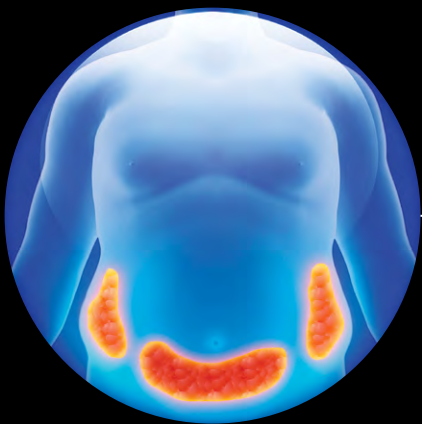
Cat. No.	Description
00194911	Human Bronchial Epithelial Cells, Asthma
00194912	Human Lung Fibroblasts, Asthma
00194850	Human Bronchial Smooth Muscle Cells, Asthma
00195275	Human Bronchial Epithelial Cells, COPD
00195277	Human Lung Fibroblasts, COPD
00195274	Human Bronchial Smooth Muscle Cells, COPD
00196979	Diseased Human Bronchial Epithelial Cells, Cystic Fibrosis
00196980	Diseased Human Bronchial Smooth Muscle Cells, Cystic Fibrosis
00194843	Diseased Human Lung Fibroblasts, Cystic Fibrosis
CC-7231	Diseased Human Lung Fibroblasts, Idiopathic Pulmonary Fibrosis

Contact our Cells on Demand™ Service for additional disease cell type requests at cellsondemand@lonza.com



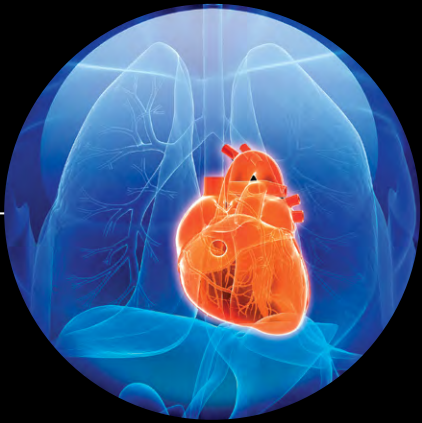
Human Diseased Primary Cell Types – Skeletal Muscle

Cat. No.	Description
CC-2900	Skeletal Muscle Myoblasts, Diabetic Type I
CC-2901	Skeletal Muscle Myoblasts, Diabetic Type II



Human Diseased Primary Cell Types – Adipose

Cat. No.	Description
PT-5007	Adult Adipose Derived Stem Cells, Diabetic Type I
PT-5008	Adult Adipose Derived Stem Cells, Diabetic Type II
PT-5023	Preadipocytes, Visceral Cells, Diabetic Type I
PT-5024	Preadipocytes, Visceral Cells, Diabetic Type II
PT-5021	Preadipocytes, Subcutaneous Cells, Diabetic Type I
PT-5022	Preadipocytes, Subcutaneous Cells, Diabetic Type II



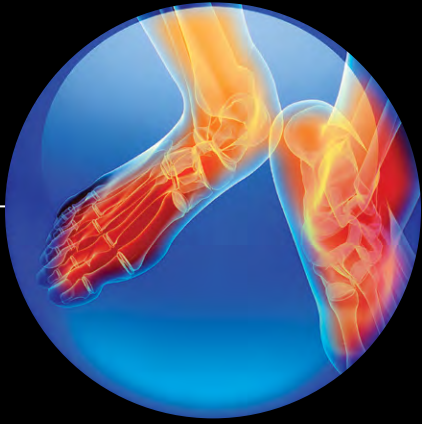
Human Diseased Primary Cell Types – Cardiac

Cat. No.	Description
CC-2914	Aortic Smooth Muscle Cells, Diabetic Type I
CC-2916	Aortic Smooth Muscle Cells, Diabetic Type II
CC-2917	Coronary Artery Smooth Muscle Cells, Diabetic Type I
CC-2918	Coronary Artery Smooth Muscle Cells, Diabetic Type II
CC-2919	Aortic Endothelial Cells, Diabetic Type I
CC-2920	Aortic Endothelial Cells, Diabetic Type II
CC-2921	Coronary Artery Endothelial Cells, Diabetic Type I
CC-2922	Coronary Artery Endothelial Cells, Diabetic Type II
CC-2927	Cardiac Microvascular Endothelial Cells, Diabetic Type I
CC-2928	Cardiac Microvascular Endothelial Cells, Diabetic Type II
CC-2923	Pulmonary Artery Endothelial Cells, Diabetic Type I
CC-2924	Pulmonary Artery Endothelial Cells, Diabetic Type II
CC-2915	Pulmonary Artery Smooth Muscle Cells, Diabetic Type I
CC-2913	Pulmonary Artery Smooth Muscle Cells, Diabetic Type II



Human Diseased Primary Cell Types – Renal

Cat. No.	Description
CC-2925	Renal Proximal Tubule Epithelial Cells, Diabetic Type II



Human Diseased Primary Cell Types – Dermal

Cat. No.	Description
CC-2929	Dermal Microvascular Endothelial Cells, Diabetic Type I
CC-2930	Dermal Microvascular Endothelial Cells, Diabetic Type II
CC-2926	Adult Epidermal Keratinocytes, Diabetic Type II

For more information about Clonetics™ and Poietics™ Primary Cell Systems or our other Research Solutions products including, Mycoplasma Protection and Detection System, Amaxa™ Nucleofector™ Systems, BioWhittaker™ Cell Culture Media, please visit : www.lonza.com/research

Contact Information